



# COLLECTIVE IMPACT FORUM



Welcomes you to the

**Collective Impact Virtual Coffee**

## **Using Data and Shared Measurement in Collective Impact**

**August 14, 2018**



# Welcome from the Collective Impact Forum

- We want to hear from you! Share your **questions** in the question box on the right.
- A **recording** of today's discussion will be made available by tomorrow. We'll send you an email once it's up in the Collective Impact Forum resource library.
- Download a PDF of today's presentation in the Handout Section on the right of your screen.



**Jennifer Splansky  
Juster**  
Executive Director,  
Collective Impact Forum



# Thank you for joining

## Join the conversation

# 1

### Ask a question

Send questions via the Q&A box on the right of your screen.

# 2

### Share on Twitter

#Clvirtualcoffee  
#collectiveimpact  
@CIForumTweets

## Technical assistance

E-mail **Ask for assistance in the Question box on the right or email [info@collectiveimpactforum.org](mailto:info@collectiveimpactforum.org)**

# New Research on Collective Impact



- Published earlier this year from Spark Policy Institute and ORS Impact, the research study **When Collective Impact Has an Impact** examines the question:
  - “To what extent and under what conditions does the collective impact approach contribute to systems and population changes?”

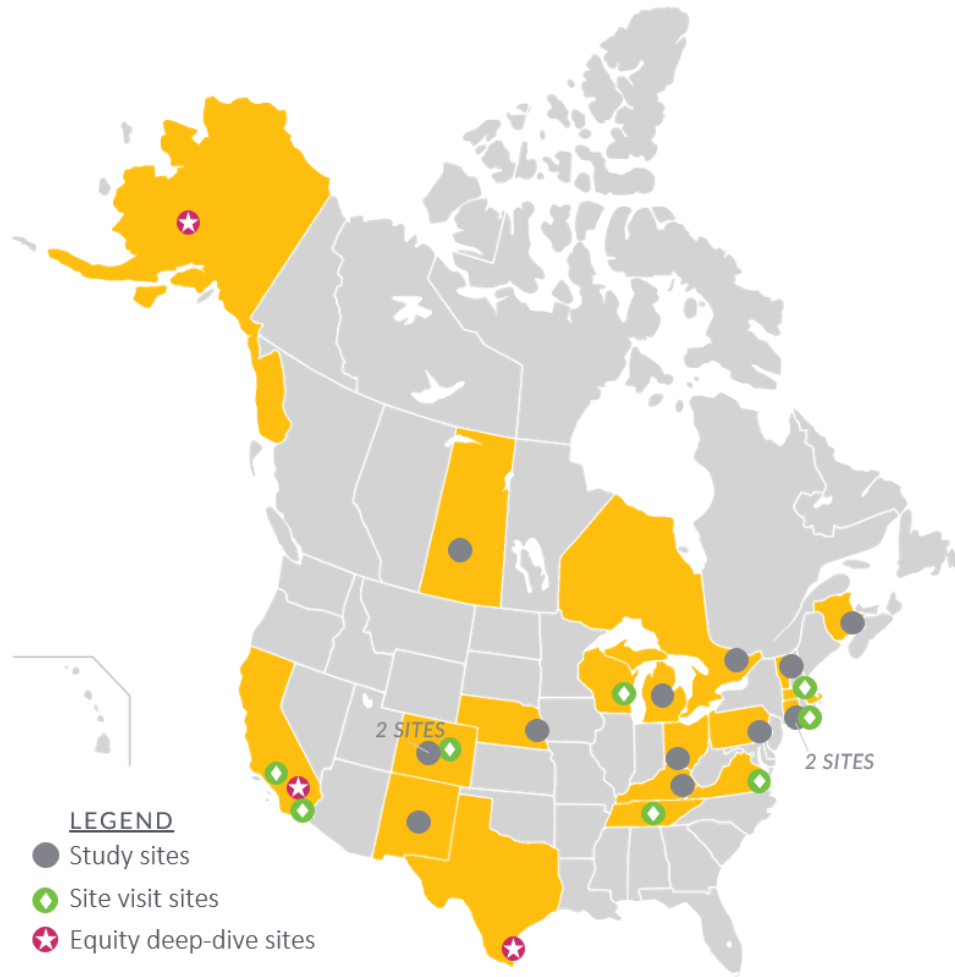
The full report is available for free download at  
[collectiveimpactforum.org](https://collectiveimpactforum.org)



# New Research on Collective Impact

## Home for Good was one of 25 sites that participated in the research study

STUDY SITES ●	
Colorado (2)	SITE VISIT SITES ◆
Connecticut (2)	
Kentucky (1)	
Michigan (1)	
Nebraska (1)	
New Brunswick, Canada (1)	
New Mexico (1)	
Ohio (1)	
Ontario, Canada (1)	
Pennsylvania (1)	
Saskatchewan, Canada (1)	EQUITY DEEP-DIVE SITES ★
Vermont (1)	
	Alaska (1)
	California (1)
	Texas (1)



# Today's Collective Impact Virtual Coffee Guest



**Emily Bradley**

Program Officer,  
Home for Good



**Michael Nailat**

Program Officer,  
Home for Good

## Share Your Questions:

Send questions via the Q&A box on the right of your screen.

## Share on Twitter

#CIVirtualCoffee  
#collectiveimpact  
@CIForumTweets



**UNITED WAY:  
A COLLECTIVE APPROACH TO  
ENDING HOMELESSNESS IN LA COUNTY**



**LIVE UNITED**

# WHAT WAS THE CONTEXT WHEN HOME FOR GOOD LAUNCHED?

---



## FRAGMENTATION

Los Angeles having a wide-spread reputation for not working together



## MANAGING HOMELESSNESS

Lack of permanent solutions and no clear goals



## PROGRAMS VS. SYSTEMS

Lots of pilots, few broad based initiatives or systems



## SCARCE PUBLIC RESOURCES

No meaningful local investment by City or County in homelessness



## HOME↑FOR GOOD

*Asterisked under the "Basic Needs" bucket of United Way's strategic plan, homelessness emerged as a focal point between the years of 2005-2010.*

## PATHWAY TO LAUNCH

- **Startling Data:** First homeless count in 2005 shows 90,000 homeless Angelenos
- **Leadership Vacuum:** County and City respond, but County's \$100M investments rejected by communities
- **Solution Emerges:** Supportive Housing demonstrates success for hardest to house and Project 50 provides local proof point
- **UW Organizes:** A-G push, HomeWalk + Cost Study garners public and media attention and support

# WHAT IS HOME FOR GOOD?

A collective and community-based effort to ensure homelessness is brief, rare and non-recurring with a few areas of initial focus:



Deepen private sector involvement



Improve data and measurements



Pilot innovations and build systems



Unlock public resources with more flexible private funds

LIVE UNITED

# GOVERNANCE



Los Angeles County



Homeless System Map

# SYSTEM COORDINATION



# POLICY





**MONITOR**  
DATA



**INVEST**  
FUNDS



**IMPROVE**  
SYSTEMS



**EMPOWER**  
PUBLIC

**IMPACT:**

Make homelessness in LA County brief, rare, and non-recurring

# Better Data

---

## Before

- Bi-Annual Homeless Count
- 20% Coverage
- Data on need
- Contract-centered database
- Program by program data

## After

- Annual Homeless Count
- 100% Coverage
- Data on results
- Client-centered database
- Regional data



Thoughts? Suggestions? Comments? Questions? Please contact Michael at [mnailat@unitedwayla.org](mailto:mnailat@unitedwayla.org)

This website uses charts and maps developed through various **Google** services.  
If your location blocks access to Google, you may not be able to see all of this site's features.

Main Data Site: <http://homeforgoodla.org/hac>

## Dashboards

### LA County Homeless Initiative Measure H



### Homeless Counts



### Coordinated Entry System

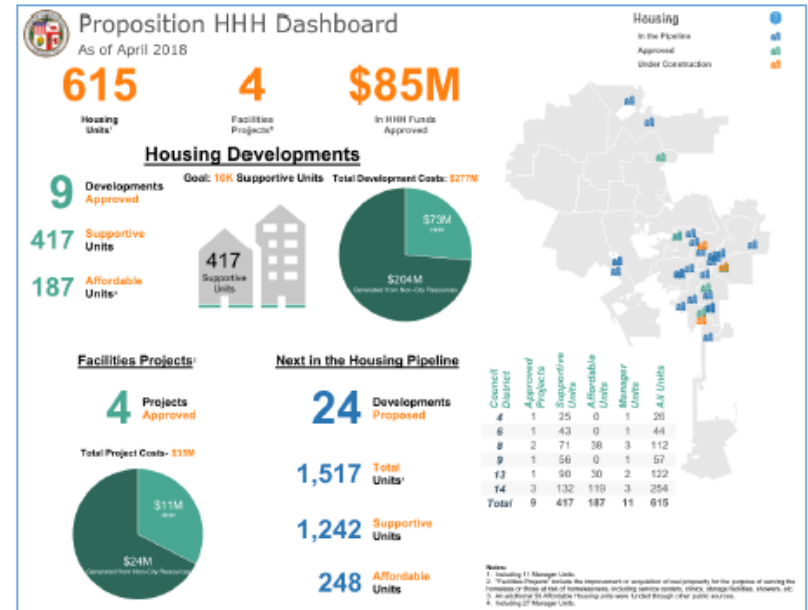
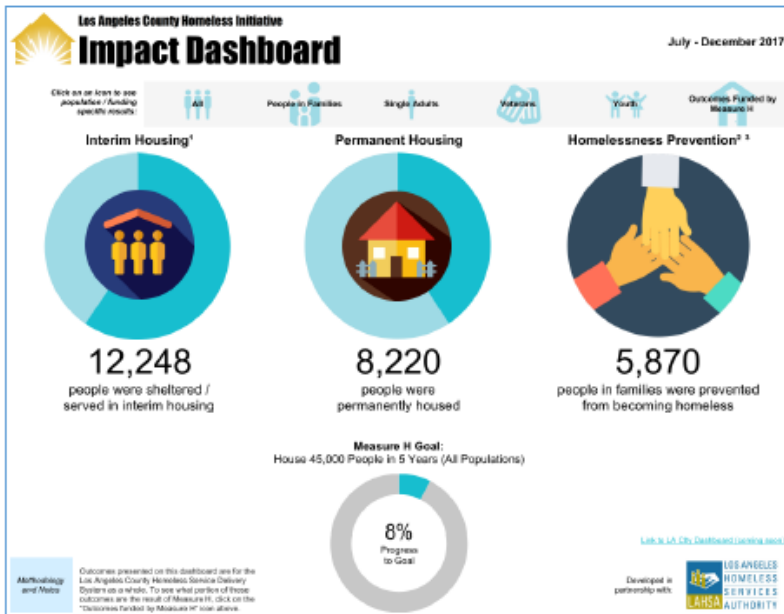


### City of Los Angeles Proposition HHH



<b>Content</b>	A summary of the impact of efforts throughout Los Angeles County to address and end homelessness, through the support of Measure H and other resources. Includes all homeless people or people at risk of homelessness served during the time-period.	The results of the annual point-in-time census of persons experiencing homelessness.	Performance reports that show what kind of people have been assessed and are being served through the Coordinated Entry System, and what kind of outcomes are being achieved.	A progress tracker for efforts to build supportive housing in the City of Los Angeles, utilizing resources drawn from Proposition HHH.
<b>Audience</b>	General public	General public	Coordinated Entry System leads, service providers	General Public
<b>Geography</b>	Los Angeles County	All areas of LA County EXCEPT Glendale, Long Beach and Pasadena	All areas of LA County EXCEPT for Long Beach	City of Los Angeles
<b>Update Schedule</b>	Semi-Annually	Annually	Monthly	Quarterly

Dashboards: <http://homeforgoodla.org/dashboards>



## Measure H:

<http://homeless.lacounty.gov/impact-dashboard/>

## Proposition HHH:

<https://www.lamayor.org/HomelessnessTrackingHHH>





*hac* academy 

The word "hacademy" is written in a lowercase, cursive-style font. "hac" is in orange, and "academy" is in grey. To the right of the word is an orange lightbulb icon with several small dots around it, representing a glowing idea.

# Q&A

Send questions via the questions box on the right side  
of your screen



## Upcoming Forum Learning Opportunities

### Collective Impact Forum Virtual Coffee Series

- September 12: Aligning Partners with the Elizabeth River Project
- September 18: Sustaining Momentum with Milwaukee Teen Pregnancy Initiative and the Connecticut Juvenile Justice Alliance

### Champions for Change 2018 Backbone Workshop

- October 16 – 18, 2018. Los Angeles, CA
- The Forum's longest-running workshop for backbone leaders and teams
- Forum events fill up far in advance. Register soon to save your spot.

**Thank you for  
joining us!**